



MX92 motorline PROFESSIONAL

USER / INSTALLER MANUAL



Correct disposal of this product
(Electrical and electronic equip-
ment waste).

EN

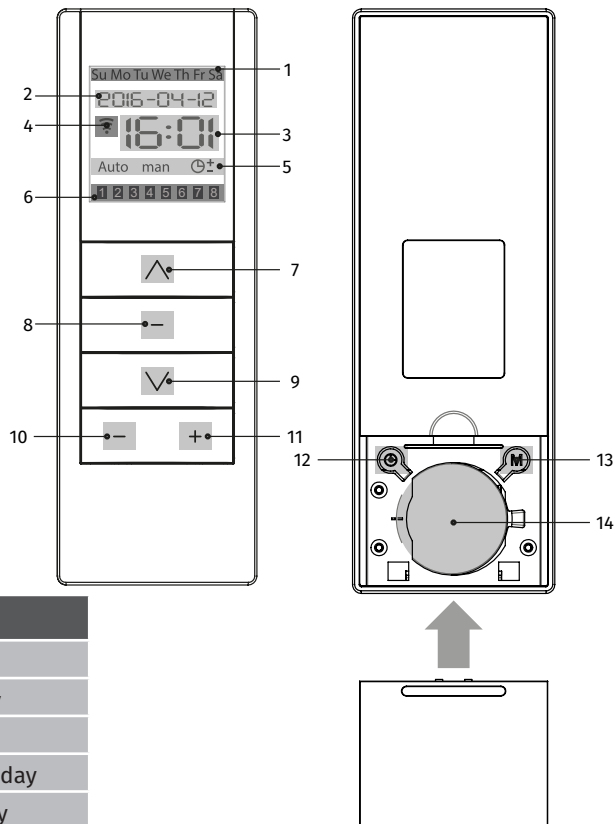


V1.1
REV. 03/2022

Technical characteristics

• Power Supply	3V(CR2430)
• Working temperature	-20 to 55°C
• Transmission frequency	433MHz
• Range	40m
• Number of channels	8 channels and 2 groups
• Code type	Rolling Code
• Dimensions	45x130x12mm

1	Week days
2	Current date
3	Current hour
4	Signal transmission
5	Programming modes
6	Channel
7	Up
8	Confirm/Stop
9	Down
10	Return
11	Advance
12	Time
13	Select
14	Battery



DESCRIPTION:

man • manual	Su • Sunday
auto • automatic	Mo • Monday
☰ • random	Tu • Tuesday
	We • Wednesday
	Th • Thursday
	Fr • Friday
	Sa • Saturday

PRE-PROGRAMMING


- When a battery is placed on the transmitter, this turns on all the characters on the display for 2 seconds. After this time stay in normal working.
- If more than 10 seconds passes without pressing any key, the remote control automatically exits programming and returns to standby mode, without record any change.

• Factory values:

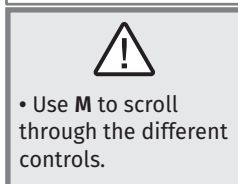
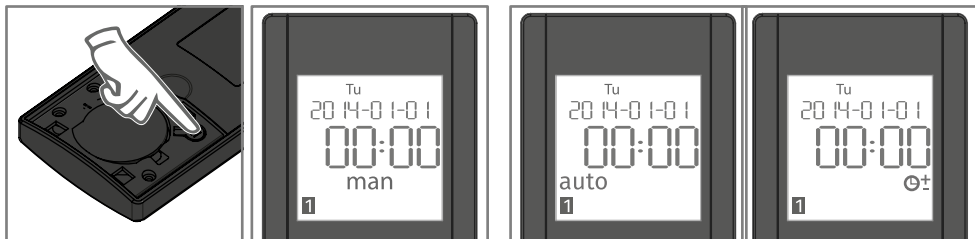
- the display shows initially: wednesday, 2014-01-01, 00:00h.
- manual mode active.
- Group 1 has the channels 1, 3, 5 and 7 memorized.
- Group 2 has the channels 2, 4, 6 and 8 memorized.

TRANSMISSION SIGNAL



Each time you press $\wedge - \vee$, the display will show  in dynamic mode, indicating the signal sending. The signal goes off when you stop pressing the button.

CONTROL OPTIONS



• Use **M** to scroll through the different controls.

• MANUAL CONTROL (man)

No timer function.

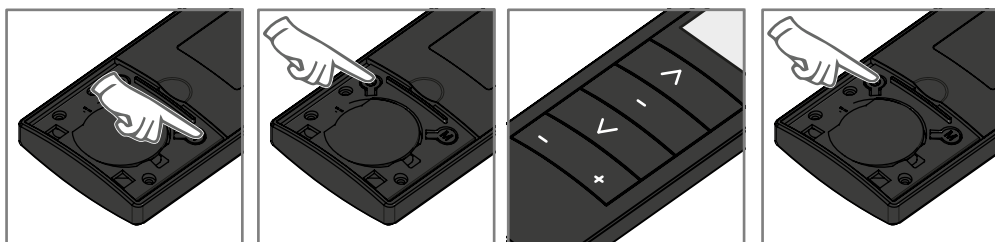
• AUTOMATIC CONTROL (auto)

With timer function.

• RANDOM CONTROL (⊕±)

With random timing function. The random remote control is implemented in accordance with Standard timing (approx. 15 min.).

SET CURRENT DATE AND TIME



1 • Press **M** until the remote control is in manual mode.

2 • Press **⊕±** for 3 seconds and the year will flash.

3 • Use the **-** and **+** to scroll through the various values that define the date / time and the **^** **∇** keys to change each value.

4 • In the end, press the **⊕±** button to confirm.

CHOOSE CHANNEL/GROUP



The display always shows what the channel functions.

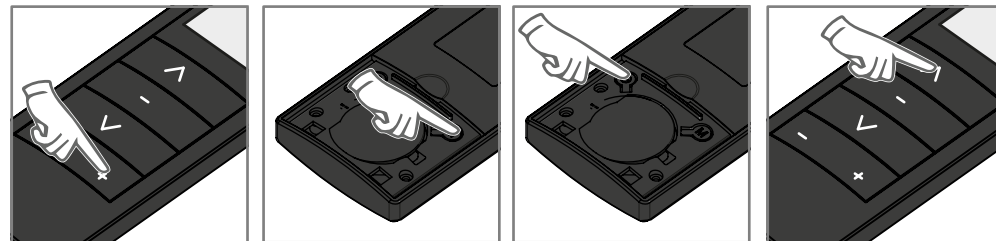
When you press **^** **-** **∇** an order will be transmitted by the indicated channel at the bottom of the display.

In automatic or random mode, use **-** and **+** to select the group 1 or group



2. Press **⊕±** for 3 seconds to enter the selected group. Use **-** and **+** to select channels. To set a channel in the group, press **^** once. To remove it from the group, press **∇** once. When the number is flashing, it means that does not yet belong to the group. When the number is fixed, it belongs to the group.

PROGRAMMING TIMER



1 • Select the channel you want using the buttons **-** and **+**.

2 • Press **M** until if you put in automatic mode (auto).

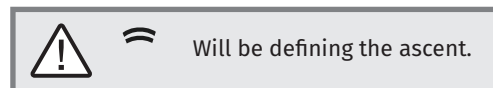
3 • Press **⊕±** for 3 seconds. The **Su** will flash and the zone of the time will appear empty.

4 • Using **^** **∇**, select the day you want to program.

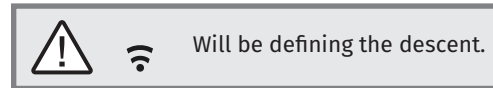


5 • Press **+** to now set the time and use **^** **∇** to change it.

6 • Press again **+** to set the minutes and use **^** **∇** to change them.



Will be defining the ascent.



Will be defining the descent.

NOTE • When you end the ascent and descent programming, the system automatically advances to the next day. If you want to quit programming press **⊕±** for 3 seconds.



Group 1 and 2 doesn't work with timer.

REMOVE TIMERS

Select the channel you want and insert **■** **Wi-Fi** **--** **---** **■** for the opening and closing times. Timers can only be deleted individually (channel by channel).



- MX92 was developed to function with MC4SP, MC4SPI, MC70, MC16 and MC18 control boards. When using other control boards may be working incompatibilities.
- The 3V lithium battery (CR2430) should be replaced once a year to ensure the correct operation of the transmitter;
- To replace the dead battery remove the plastic cover, remove the battery out and insert the new one, respecting the polarity shown on the container;
- The used battery must be placed in containers intended for this purpose.